

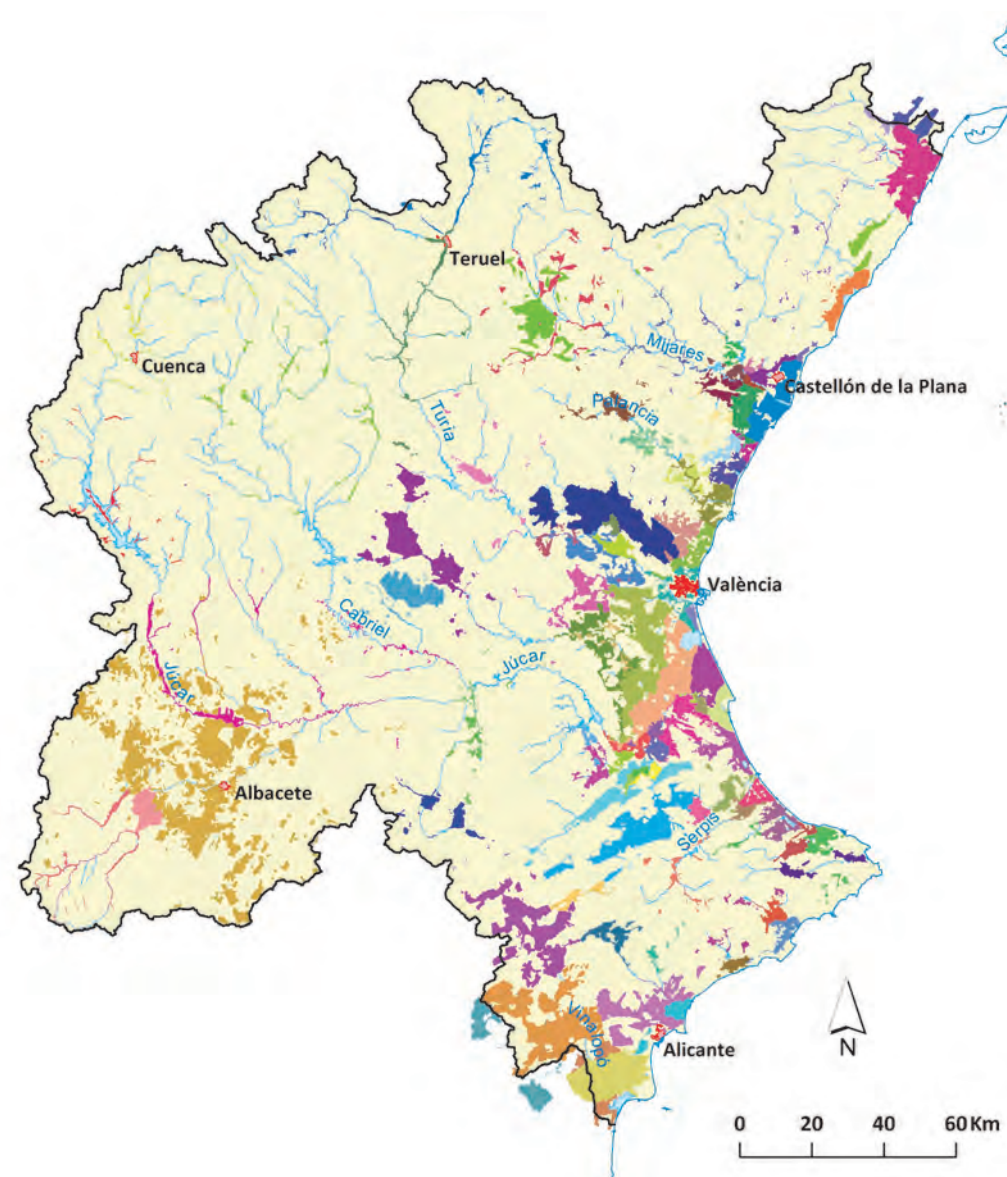
## 6. USES AND DEMANDS

The current water demand in the District is estimated at approximately 3,200 hm<sup>3</sup>/year, with agricultural demand involving a greater volume, namely 80% of the total.

The agricultural sector has to provide for an irrigated area of approximately 390,000 ha. This volume of demand will predictably decrease in the future due to the development of the scheduled modernisation works through which the transformation of part of this surface into localised irrigation, is foreseen. The main irrigated areas are located in the Plana of Castellon, València and the lower basin of the Turia river, eastern La Mancha, Júcar river bank and the lower basin of the Júcar river, as well as the irrigated lands of the valleys of Vinalopó and Monegre rivers, the main crops of which are citrus fruits, grain cereals, grapevines for wine-making and vegetables.

Urban demand, with 16% of the total, is the next most important demand. The current population of the District is estimated at approximately 5,200,000 inhabitants, which increases up to 5,700,000 inhabitants if the effect of seasonal population is considered. The main urban and tourist centres are located along the Mediterranean coast, especially in the surroundings of the area of València, in the Júcar river bank, in the coast of Alicante and in the valley of the Vinalopó river: in the inland areas, the province capitals are particularly notable, namely Albacete, Cuenca and Teruel.

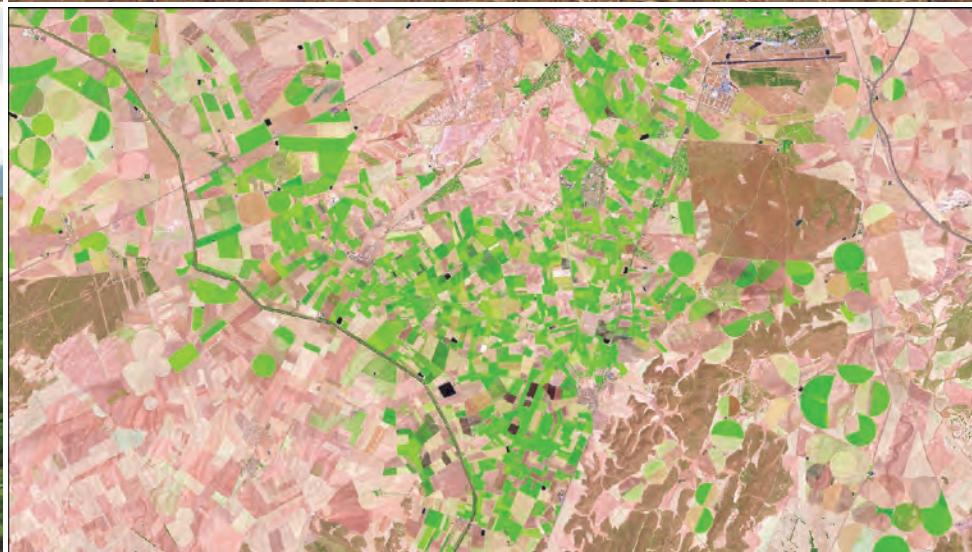
With regards to other demands, industrial demand should be highlighted, including the demand for electric energy production as well as the demand required for the manufacturing industry. In this regard it should be noted that most of the industrial energy demand is non-consumptive except for the refrigeration of the nuclear power plant of Cofrentes. Regarding the demand for the manufacturing industry, a very important part is supplied through the urban supply networks, which is therefore accounted within this demand. Total non-connected industrial demand is estimated at approximately 4% of the total, and it is concentrated mainly in the Turia, Júcar and Vinalopó-Alacantí systems.



Main irrigated areas of the District (Agricultural Demand Units)

Scenario	Demands (hm <sup>3</sup> )				
	Urban	Agricultural	Industrial	Recreational	Total JRBD
2012	525	2,581	123	12	<b>3,241</b>

Total demand for use in the Júcar River Basin District



Images:  
1. Orange trees on the Júcar river bank in Cullera  
2. Cereal crops in Cuenca  
3. Vineyard in Requena  
4. Horticultural crops in Minaya  
5. Rice fields in Sueca  
6. Crops in the area of Los Llanos, in Eastern La Mancha (image taken by remote sensing)

The importance the citrus-fruit crops in the District is highlighted, and it occupies almost half of the irrigated surface (43%).

The second most important group are grain cereals with 12% of the irrigated surface, followed by wine grape vines (9%) and outdoor vegetables (9%).

In the other irrigated surface (27%) the different types of crops are grouped, among which corn and rice should be highlighted.